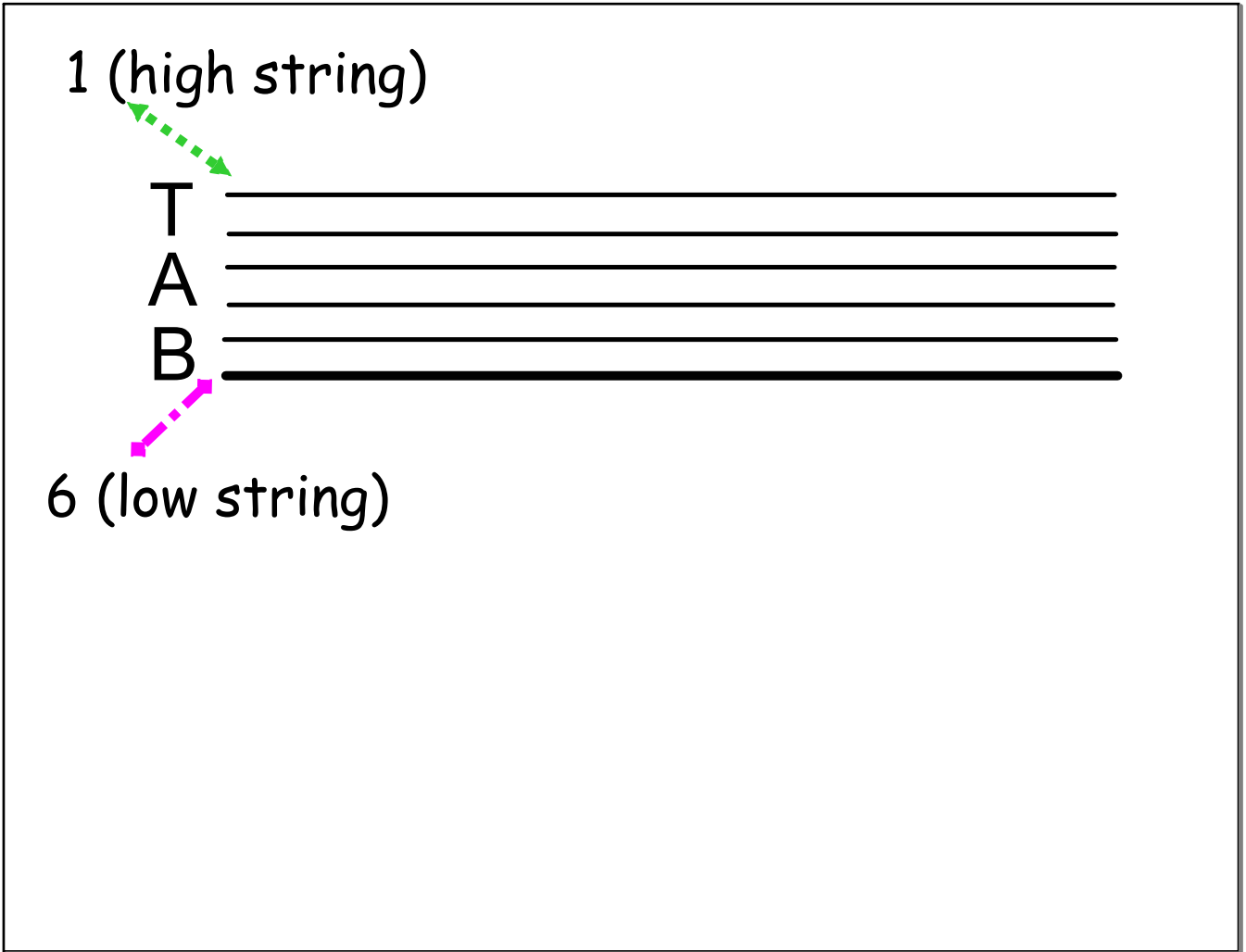
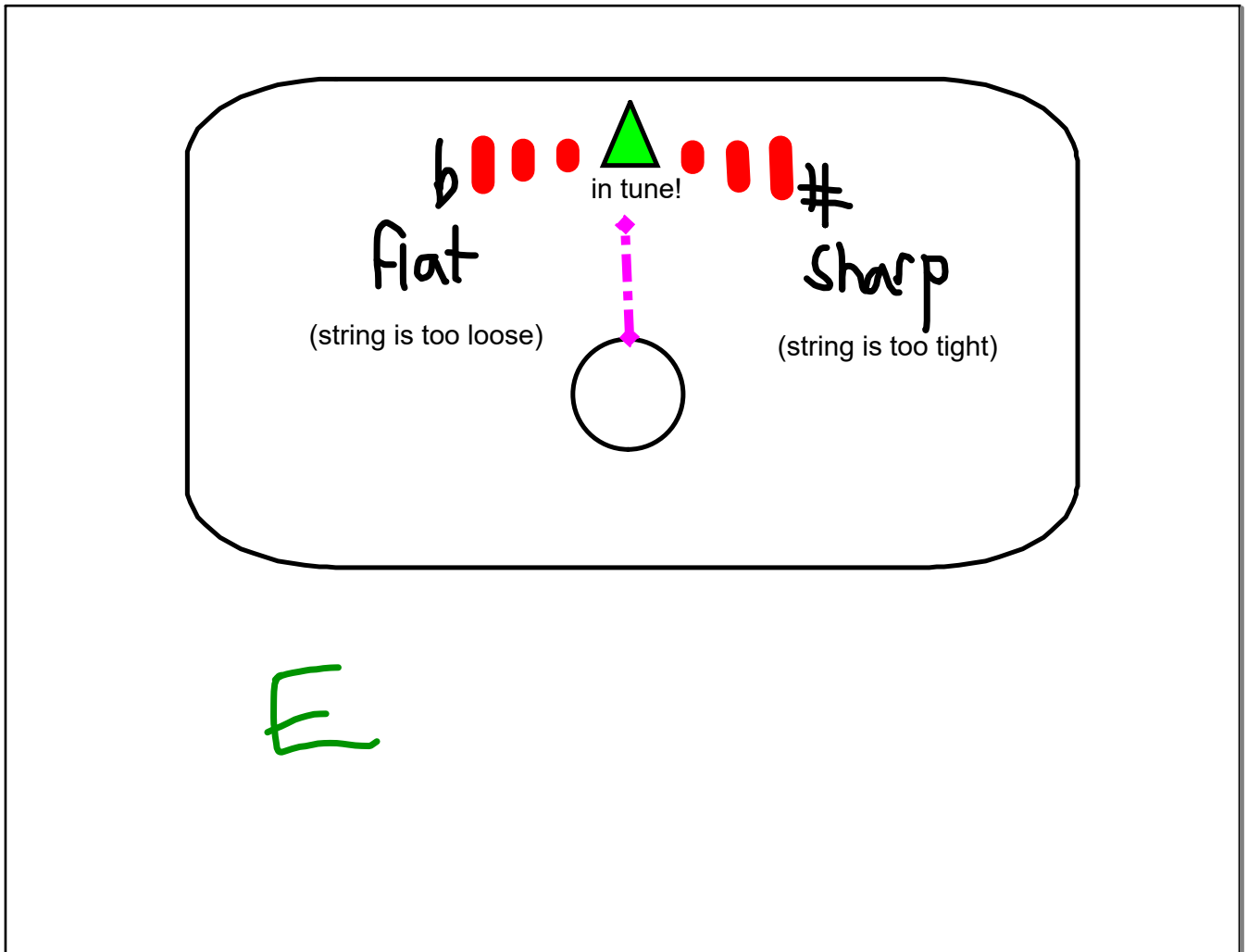


Aug 26-3:17 PM



The image shows a musical staff with a treble clef on the left. Below the staff are five horizontal lines representing guitar tablature. To the left of these lines, the letters 'T', 'A', and 'B' are stacked vertically, indicating that the lines are for guitar tablature.



Bienvenue!

WELCOME!

École Dieppe Guitar Club

*Put your case
under your seat. 😊